

An Inspiration, for Solving the Problem of Superstructure, Divergent Roots

Milan Pavlovic*

Specialist in periodontology and oral medicine, free ceramics, implants, Dentikum, Serbia

Submission: October 24, 2016; **Published:** October 25, 2016

***Corresponding author:** Milan Pavlovic, Dentist, Specialist in periodontology and oral medicine, free ceramics, implants, Dentikum, Serbia, Makedonska 21, 11000 Beograd, Tel: +38163218520; Email: office@drmilanpavlovic.com

Abstract

We often encounter the problem of reconstruction of devitalized teeth. Their crown is caries destroyed or broken. The possibilities are fiberglass, Logan or cast upgrade. Everything is clear when a tooth has one root or two and how do when a tooth has three roots. My idea has become a reality and I have to say that I have a positive experience. In the professional literature, I have not found this case, and therefore I think it is worth a look! Instructions for making casted superstructure, three root tooth.

Keywords: Divergent roots, Supra structure, Cast upgrade mode

Power Presentation

We often encounter the problem of reconstruction of devitalized teeth. Their crown is caries destroyed or broken. The possibilities are fiberglass, Logan or cast upgrade. Everything is clear when teeth has one root or two and how do when a tooth has three roots.

1. It is necessary to clean all tooth decay, and the wall crown bevel and adapt of cast.
2. Preparation of the root canal for a cast upgrade.
3. A divergent root is not possible to do it in one piece. Therefore, we start from the channel that is the more divergent. His supra structure adapted to the next print. The factor that gives us guidance, the trajectory of the ingestion of the next. Also we are working with third.

The order item is 1,2,3.

When we practice for probe arrangement is reversed 3,2,1.

If there is free space, which can be adjusted, adding new mass Palavit G, and now is the time to correct all.

Parts that cannot be corrected remain in the tooth, and they are moistened or fatty, and part of that is correct, is dry, apply the additional mass and processing.

4. If everything is well done, you will be pleasantly surprised by how everything is stable, firmly. Such supra structure, process the turbine, diamond bur, to the desired shape.
5. Obtained metal castings, try out, and if necessary, rewrite, and then Cement.



PPT 1: No.16with visible divergent roots.



PPT 2: No.16with visible divergent roots



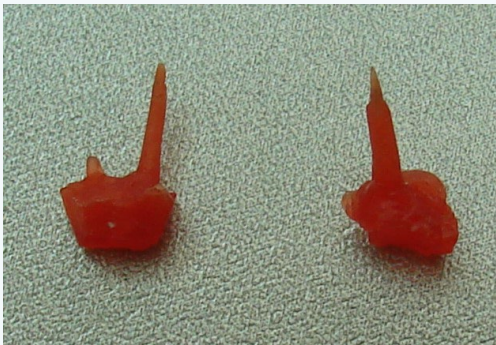
PPT 5: Long, power



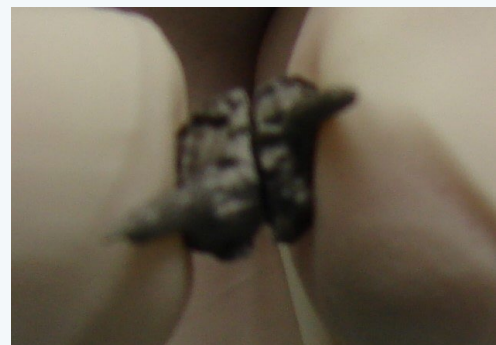
PPT 3: In bucal



PPT 6: divergently



PPT 4: Two parts of suprastructure



PPT 7: divergently



PPT 8 :test palatal work



PPT 11: buffed teeth ready for crowns



PPT 9: rehearsals buccal work



PPT 12: buffed teeth the view from the other side



PPT 10: buffed teeth ready for crowns



PPT 13: temporary teeth 1



PPT 14: temporary teeth 3

**Your next submission with JuniperPublishers
will reach you the below assets**

- Quality Editorial service
- Swift Peer Review
- Reprints availability
- E-prints Service
- Manuscript Podcast for convenient understanding
- Global attainment for your research
- Manuscript accessibility in different formats
(Pdf, E-pub, Full Text, Audio)
- Unceasing customer service

Track the below URL for one-step submission
<http://juniperpublishers.com/online-submission.php>