



EVR Cancer Therapy & ILVM Medical System Detections (Energy Vito Reel Multimode Medical Imaging Material Data Reconstitution Geno-Embryo- Somatic Computational Bio Imaging and Lesionel Auto Detection)



El Menouar Salah*

Researcher and Inventor at Private Brahim Salah Laboratory Imaging and Health Applications, Algeria, North Africa

Submission: April 29, 2017; **Published:** June 19, 2017

***Correspondence Address:** El Menouar Salah, Researcher and Inventor at Private Brahim Salah Laboratory Imaging and Health Applications, private brahim salah laboratory imaging and health applications 97, cite md boudiaf 46100, el malah, ain temouchent Algeria, North Africa, Email: salahelmenouar@hotmail.com

Abstract

When any human is front an issue, he research the solution, and if the issue concerning the life of human, the real difficulty is to bring a real, efficient and practicable solution avoiding a dramatically consequences wish human can't support and repair. In this context, I built my work on basic and fundamental research to discover the way to communicate with the energetically emissions of the human body, the life energy; and updating a special language to input there in specific EVR caption process system without using any external emission system as used in the most of conventional medicals imaging systems detections and just using a special pure vital energy caption.

Abbreviations: EVR : Energy Vito Reelle; ILVM: imager logic vitoreelle multimode

Introduction

Multiple experiences in the EVR domain conduce to discover the real existence of the Life Energy, we obtain many primary experimental results, different manipulations conduce to performing the process systems, discover and knowledge the proprieties of the life energy and real capabilities of their exploitation in different scientific fields to get real solutions on developing practicable and efficient applications.

Certainly we can't expose all of our most of my work , but I take one of the vital and important application in this case with specifically and exceptional results wish proof not just only the existence of the life energy but the real impact of their in science universe and human life. The application chosen is EVR Data Material Reconstitution Model. The lived experiences along the evolution of the science and technology with many inventions like the radiology in their firsts steps by using X-Ray and the advent of the computing systems in their development and exploitation; and their intervention in all of medical investigations especially in this case .

The problem encountered conduce to develop an different and complexes computing systems hard, architectural hard and

soft, but all of the big work released by the honorable scientists and technologists are based on knowledge physics, biophysics systems and existent science data information; that is the reason of the big machines and complexes software, algorithms process used in continuously development until know.

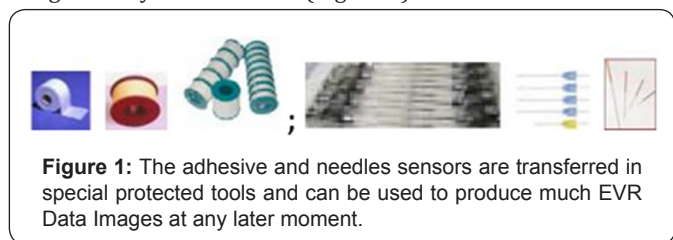
But the results obtains don't release an approach with the living images; the big difference between all of human images produced by all of imaging systems and the I technology are the real proof that we are front an issue wish have the same basic problem, yes the similar computing process as software and hard are used with all of imaging technology exists as X-Ray, Tomography, IRM, Ultrasonography , Pet-Scan...Therefore the real basic problem is that in technology process used and not in the computing systems. Today, we use the EVR basic technology with just an Personnel Computer and Specific Software without using any data-body image or others complexes big machines and the challenge is that the results obtains; the fact is that the EVR Medical Imaging Detection shown below by some examples without any risks all for patients and medical staff in very comfortable conditions in record time.

EVR Data Acquisition Summary Process

Special, specific and exceptional process EVR Data acquisition is used as simple or multiples data acquisition possibilities with many different supports without using any external emission or protocol preparation; just use a pure caption. The specificity of the EVR Pure Caption Equipment is updated depending the imaging investigation detection case. The used tools in the first steps of the EVR data-images acquisition is

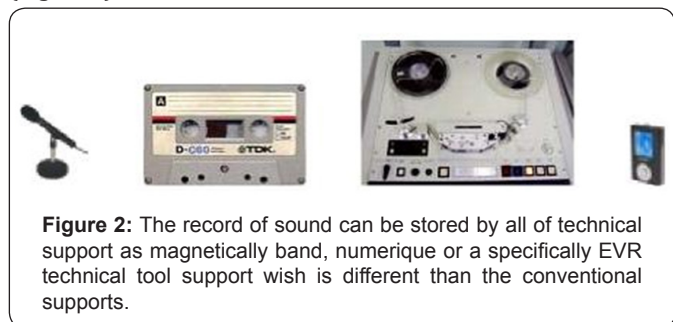
Adhesives, Needles, Others Sensors

The adhesive and needles sensors are transferred in special protected tools and can be used to produce much EVR Data Images at any later moment (Figure 1).



Sound Acoustic Sensors

The record of sound can be stored by all of technical support as magnetically band, numerique or a specifically EVR technical tool support wish is different than the conventional supports (Figure 2).

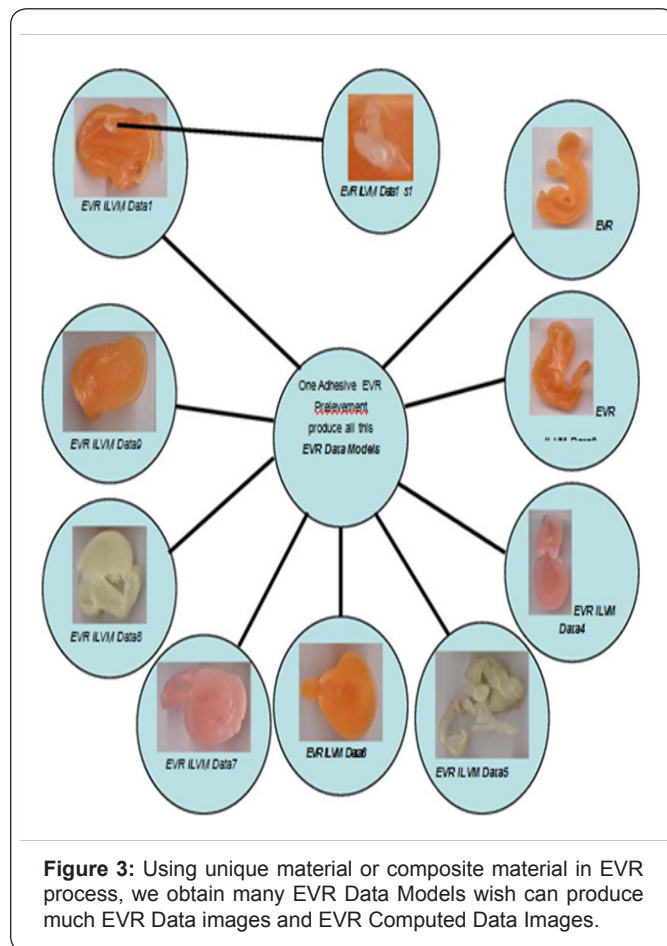


The EVR ILVM process

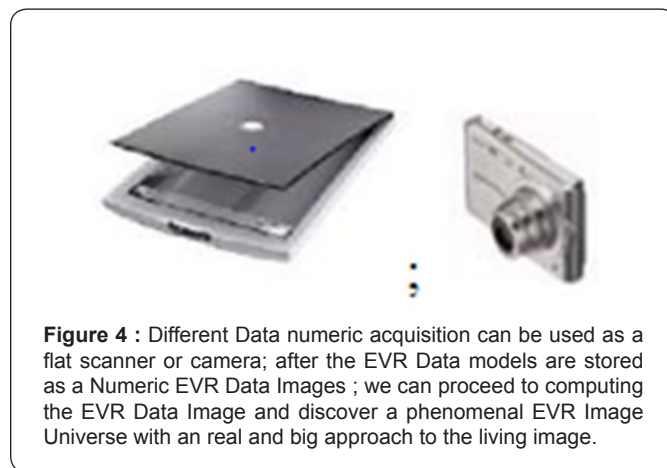
The Details of the EVR ILVM Original Process can't be shown in all of the steps of process because there are some very complexes and special applications in others domains. The Software used in the EVR Systems for the computed images can be developed with more efficiency and capabilities with scientists in futer. NB /It's important that all the scientists know that the EVR Data Source Image never use any software or any computing system in the original EVR Process wish provide by two secondary process steps with the ILVM an Static and an Functional real time image with morphological, Anatomical, Histological, Cytological and Bimolecular Data Images not computed and wish can be transferred for more manipulations and better study on the Personnel Computer. The second process is the model reconstitution wish is shown by some examples in this special conference, and wish provides a Static EVR ILVM Data Models and original images with many static computed images.

EVR Material Model Data Reconstitution

After we acquire the Data-EVR, we can exploit them by different EVR process and especially in this case by the EVR Material Data Model Reconstitution (Figure 3). Using unique material or composite material in EVR process, we obtain many EVR Data Models wish can produce much EVR Data images and EVR Computed Data Images. We can obtain more models if it's necessary and if we won't release a very special investigation.



EVR and Computing Systems Interventions



Different Data numeric acquisition can be used as a flat scanner or camera; after the EVR Data models are stored as a Numeric EVR Data Images; we can proceed to computing the EVR Data Image and discover a phenomenal EVR Image Universe with a real and big approach to the living image (Figure 4).

ILVM Data Images Process Computational Bio-Imaging and Visualization

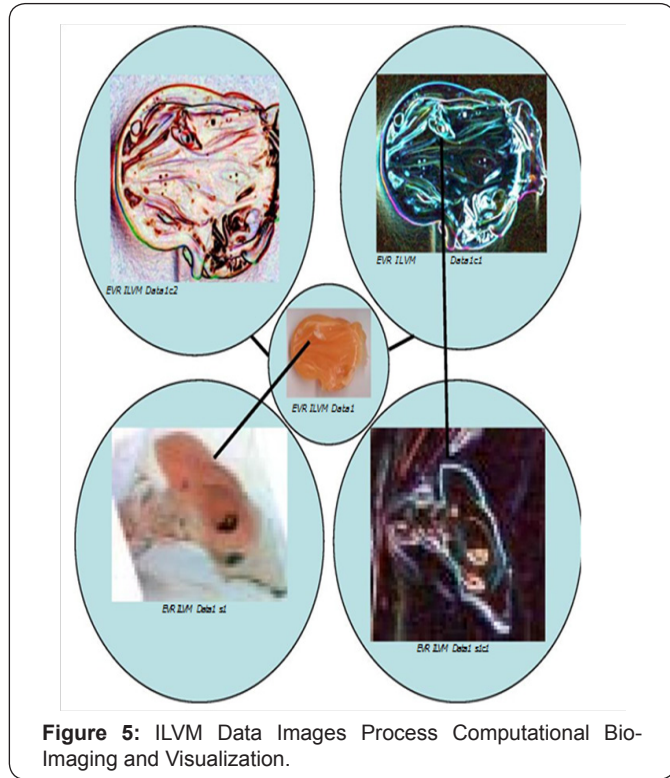


Figure 5: ILVM Data Images Process Computational Bio-Imaging and Visualization.

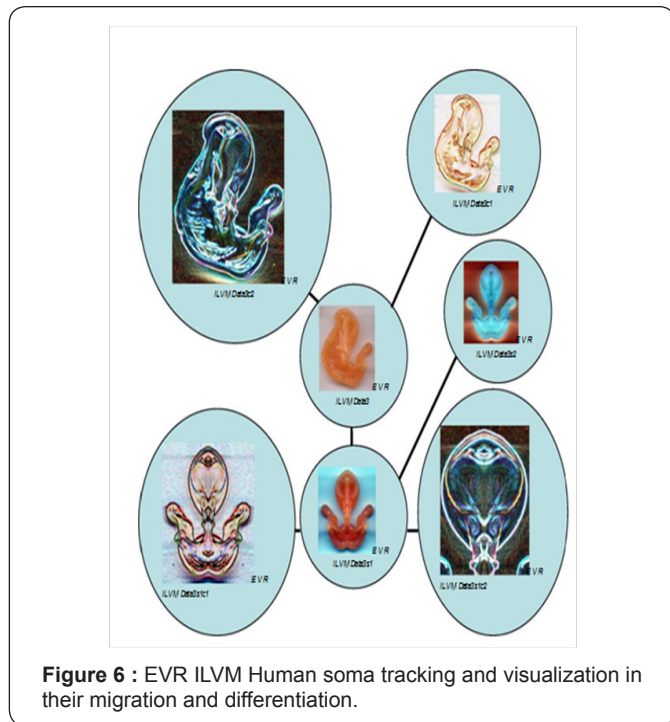


Figure 6 : EVR ILVM Human soma tracking and visualization in their migration and differentiation.

After we seen the EVR Imaging Systems Results, certainly we release that all the results wish can be obtained by the domains before really exists and obtained in the EVR Imaging Systems Process wish provide more than this with a specifically EVR Images with many analysis capabilities in New Science EVR Universe (Figures 5-9).

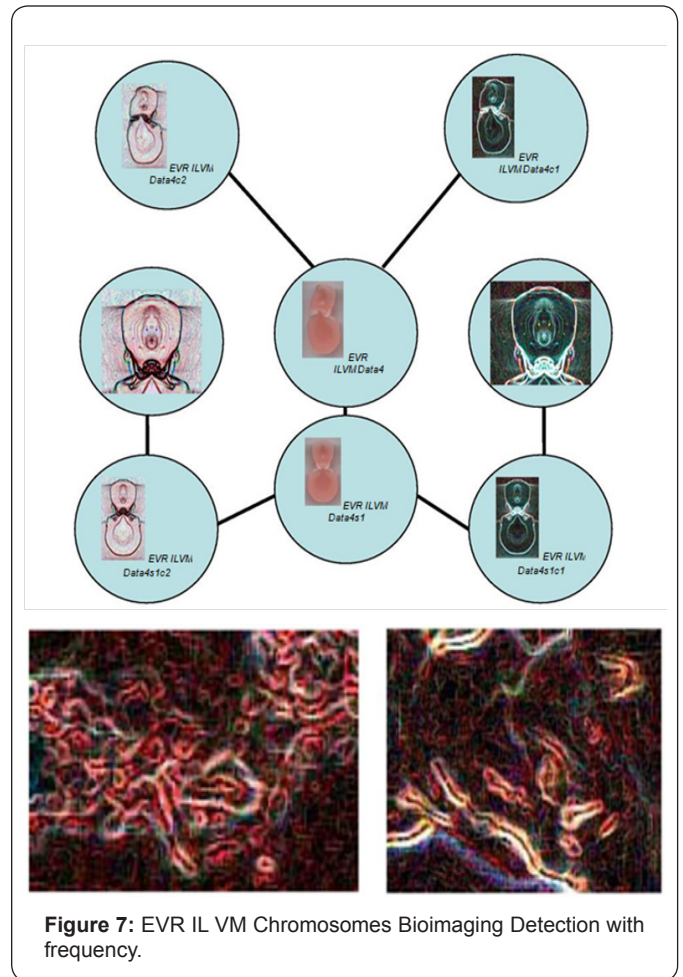


Figure 7: EVR IL VM Chromosomes Bioimaging Detection with frequency.

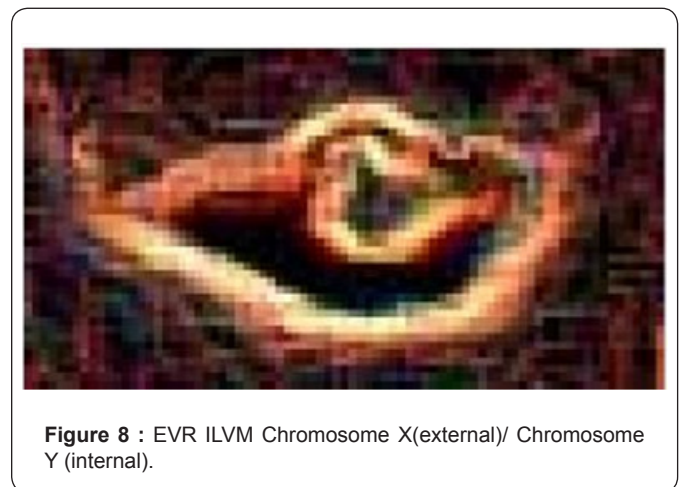


Figure 8 : EVR ILVM Chromosome X(external)/ Chromosome Y (internal).

This is Progress of the Evr Imaging Systems With Real Obtains Images

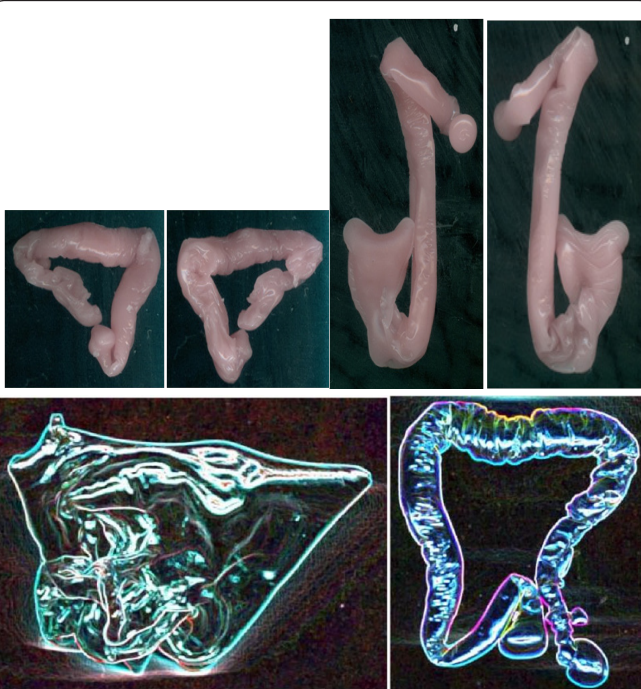


Figure 9 : The transparency is one of the EVR Capabilities Medical Exams Lesionel Auto localisation Computed Image.

Conclusion

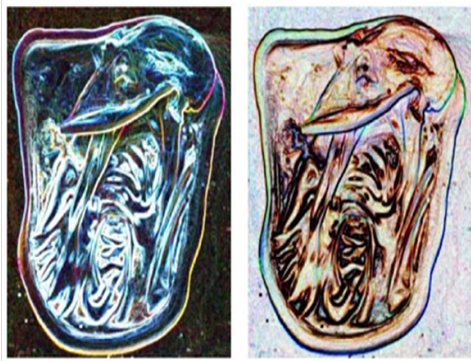


Figure 10 : Human EVR ILVM Anatomical-Histological-Cytological Images (Men).

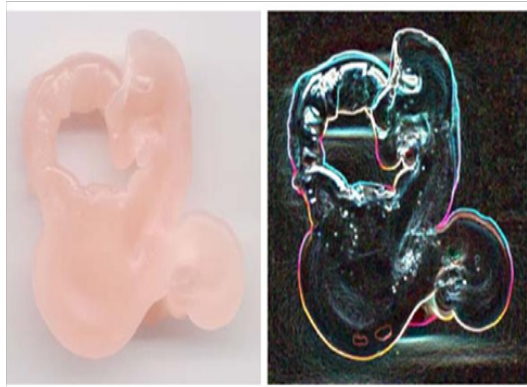


Figure 11 : Special EVR ILVM Lesionel Autolocalisation (Girl 11 age/possible it's a collagen disease).

The challenge of the EVR ILVM is to provide security, efficiency, credibility of the medical exams and get real solutions in most comfortable conditions all of patient and medical staff in record time. This is some additional EVR ILVM Computed images wish show the diversity of the EVR ILVM intervention in all of medical imaging exams possibilities (Figures 10-14).

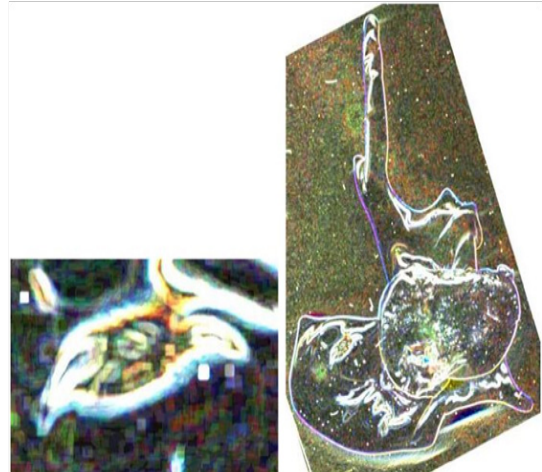


Figure 12 : Ear EVR ILVM Image with Visualization of the Cochlea, Semicircular Canals and (Men 50 age).

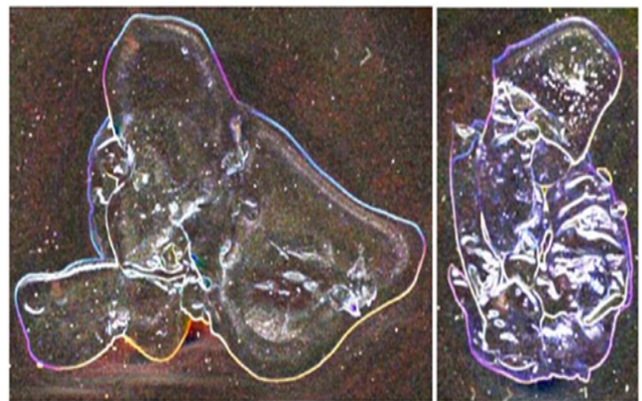


Figure 13 : Ear EVR ILVM Computed Images (Men).



Figure 14 : Breast Galactophoric EVR ILVM Data source and computed Image.

Our Lab is the first and the only reference that we have because this is a new technology and a new discovery.

After years of scientific researches, we finally release scientific discoveries which we did prove it by demonstrations

and a high quality medical imaging. I have developed some processes like Medical Imaging with a quality much better than Scanner and RIM systems. And can give you a deep investigation and an early detection of the lesion.

The name of this machine is I.L.V.M (IMAGER-LOGIQVITOREELMULTIMODAL-IMAGIN-SYSTEM)

Using this system we can obtain:

- i. A medicals images using:
 - a. surgical tape (After we stick this tape anywhere on the body of the patient then we remove it and we explore it using our system, we can explore the whole patient body with just this tape)
 - b. Stethoscope (cardiac and pulmonary explorations).
 - c. Voice and sound (for crane and brain examination).
- ii. Using our system, the patient body will not expose to any radiation emissions, the system use only reception to detect the Lesion.

iii. Never use products, isotopes, injections or any protocols.

iv. From one Exam we can many images that contain all the details that allow us to get valuable information to better treatment for the patient as earlier as possible.

v. Any Exam will never be more than 2 to 5 minute.

vi. The auto detection of lesions can provide a veritable opportunity to the medical diagnostic.

vii. Our system allows an Auto-detection of any lesion.

viii. Our system has others capabilities not only in medical arena, but also in many other applications.

ix. If you allow us, we can use a voice recording of one of your members that you send us by email to get a full record of his medical exam with our system and send the result to you by email as an example of what our system is capable of.



This work is licensed under Creative Commons Attribution 4.0 License
DOI:10.19080/CTOIJ.2017.05.555666

Your next submission with Juniper Publishers will reach you the below assets

- Quality Editorial service
 - Swift Peer Review
 - Reprints availability
 - E-prints Service
 - Manuscript Podcast for convenient understanding
 - Global attainment for your research
 - Manuscript accessibility in different formats
- (Pdf, E-pub, Full Text, Audio)**
- Unceasing customer service

Track the below URL for one-step submission

<https://juniperpublishers.com/online-submission.php>