

Separate Compartments with Black and Albino Hairs Presented in an Ovarian Teratoma in Nigeria: Case Report

Wilson IB Onuigbo*¹ and Bertram Igbogbahaka²

¹Department of Pathology, Medical Foundation and Clinic, Nigeria

²Uchenna Hospital, Nigeria

Submission: July 19, 2016; Published: August 02, 2016

*Corresponding author: Wilson IB Onuigbo, Department of Pathology, Medical Foundation and Clinic, 8 Nsukka Lane, Enugu 400001, Nigeria, E-mail: wilson.onuigbo@gmail.com

Abstract

Journals are replete with variations on the theme of ovarian teratomas. In this context, the senior author had written on this topic as far back as 1976, and as recently as 2015. Therefore, in this paper, attention is drawn to a curious case written up with another author. It concerned an ovarian teratoma containing different compartments exhibiting albino and black hairs respectively. Sadly, lack of follow-up prevented further advance such as considering familial albinism.

Keywords: Ovary; Teratoma; Albinism; Co-authorship; Heredity; Igbo; Nigeria

Introduction

Ovarian teratoma is illustrative of the special form of growth which exhibits the bodily three-germ cell elements [1,2]. Likewise, there are several variations on the theme, including those written by the senior author (WO). Thus, beginning in 1976 [3], others appeared as recently as 2015 [4-6]. Therefore, this joint Case Report concerns differently colored hair compartments in a teratoma in Nigeria.

Case Report

OG, a 32-year-old, para-3 woman of the Igbo ethnic group [7] attended the Uchenna Hospital at Aba in the South-eastern region of Nigeria. The co-author (BI) saw her on account of secondary infertility. Examination revealed a suprapubic mass. After routine procedures, operation was duly carried out. An ovarian cyst was removed.

The specimen was received at a Reference Pathology Laboratory in Enugu by the senior author (WO). It was a 12 x 7 x 7 cm bossed mass. On section, it was multi-loculated. (Figure 1) reveals pointer A with albino hairs and pointer B with black hairs. Between them, there is another albino hair-containing locule. These appearances were indicative of benign teratoma. Her recovery was uneventful.

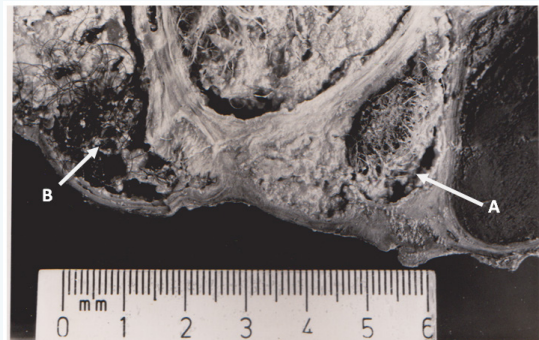


Figure 1: Cross section to show a teratoma of the ovary with arrow.

A: pointing to a compartment containing albino hair unlike; B: showing black hair.

Alas! Questions arose. Does albinism run in the family? Has she leucoderma patches? Unfortunately, the research could not proceed apace because she was lost to follow-up. This is a local problem in some communities!

Discussion

This singular case was not found with Internet Search. Incidentally, the two authors, who are named with partial italics, i.e, Onuigbo and Igbogbahaka, are members of the Igbo Ethnic

Group in Nigeria [7]. Whereas the originating clinic is far from the receiving Laboratory, the case illustrated what had been discussed before [8,9], viz, that an urban histopathology establishment can render suitable service to a remotely situated clinic. Of course, this is a far cry from the unnecessary debate in the UK as regards the fruitlessness of any laboratory service rendered away from a requesting Hospital [10]! Moreover, on the other hand, it is in keeping with the UK Group's theme that setting up a histopathology data pool is useful for epidemiologic analysis [11]. The present case is illustrative of that timely idea. Alas! There is the tendency of poor follow-up which tends to militate against further development [12].

References

1. Parrington JM, West LF, Povey S (1984) The origin of ovarian teratomas. *J Med Genetics* 21(1):4-12.
2. Maiti S, Fatima Z, Anjum ZK, Hopkins RE (2008) Ruptured ovarian cystic teratoma in pregnancy with diffuse peritoneal reaction mimicking advanced ovarian malignancy: a case report. *J Med Case Rep* 2: 203.
3. Onuigbo WIB (1976) Teratomas in the Igbos of Nigeria. *J National Cancer Inst* 57(5): 1191-1192.
4. Onuigbo WIB (2015) Sacrococcygeal teratoma in a developing community. *J Case Rep Stu* 3(3): 2348-9820.
5. Onuigbo WIB (2015) Ovarian neoplasms coexisting with contralateral benign teratoma. *J Cancer Therapy* 1: 1-3.
6. Onuigbo WIB (2015) Historical concepts of ovarian dermoid cysts. *J Gynecol Res* 1(2): 202.
7. Basden GT (1966) *Niger Ibos*. Cass, London, UK.
8. Onuigbo WIB, Mbanaso AU (2005) Urban histopathology service for a remote Nigerian hospital. *Bull Roy Coll Pathol* 132: 32-34.
9. Onuigbo WIB, Ogbonnaya JC, Mbanaso AU (2007) Temporal trends in the utilization of surgical pathology in the Enugu-Umuahia axis in Nigeria. *J Coll Med* 12(2): 99-101.
10. Lilleyman J (2002) From the president. *RCPATH Bull Roy Coll Pathol* 117: 2-3.
11. Macartney JC, Rollason TB, Colding BW (1980) Use of a histopathology data pool for epidemiological analysis. *J Clin Pathol* 33: 351-353.
12. Kotwal PP, Farooque M (1998) Macroductyly. *J Bone Joint Surg Br* 80(4): 651-653.